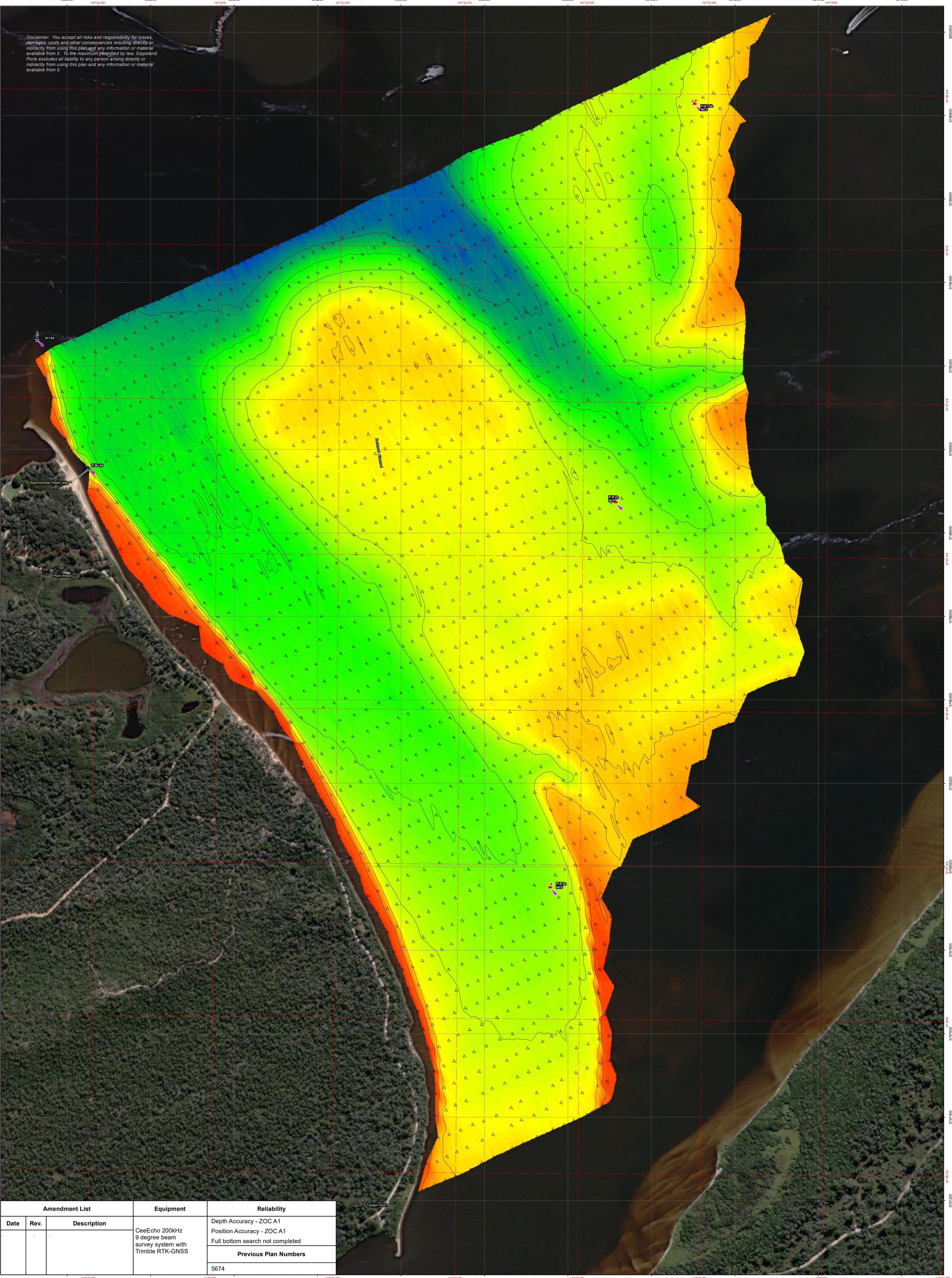



Disclaimer: You accept all risks and responsibility for losses, damages, costs and other consequences resulting directly or indirectly from using this plan and any information or material available from it. To the maximum permitted by law, Gippsland Ports excludes all liability to any person arising directly or indirectly from using this plan and any information or material available from it.



Amendment List		Equipment	Reliability
Date	Rev.	Description	Depth Accuracy - ZOC A1 Position Accuracy - ZOC A1 Full bottom search not completed
		CeeEcho 200kHz 9 degree beam survey system with Trimble RTK-GNSS	Previous Plan Numbers 5674

<p>Scale 1:4,000 @ A1</p> <p>0 50 100 200 300 400 metres</p> <p>Notations Datum for soundings is A.H.D. Co-ordinate system is GDA2020 (Red) and MGA2020, Zone 55 (Grey). Horizontal and Vertical positioning derived using PPK-GNSS. Contours are at 1m intervals. All values are in metres. Negative depths indicate drying heights.</p>	<p>Surveyed by B.Spafford & S.Harman</p> <p>Date of Survey 24/01/2024</p>	 <p>Copyright Gippsland Ports 2024</p>	<p>Gippsland Lakes</p> <p>Lake Victoria Rotomah Channel</p>		<p>6750</p>		
	<p>Compiled by B.Spafford (B.Tech)</p> <p>Checked by M.Spykers (BAppSc Surveying)</p> <p>Date Checked 01/02/2024</p>					<p>Sheet Size A1</p>	
				<p>Sheet 1 of 1</p>			