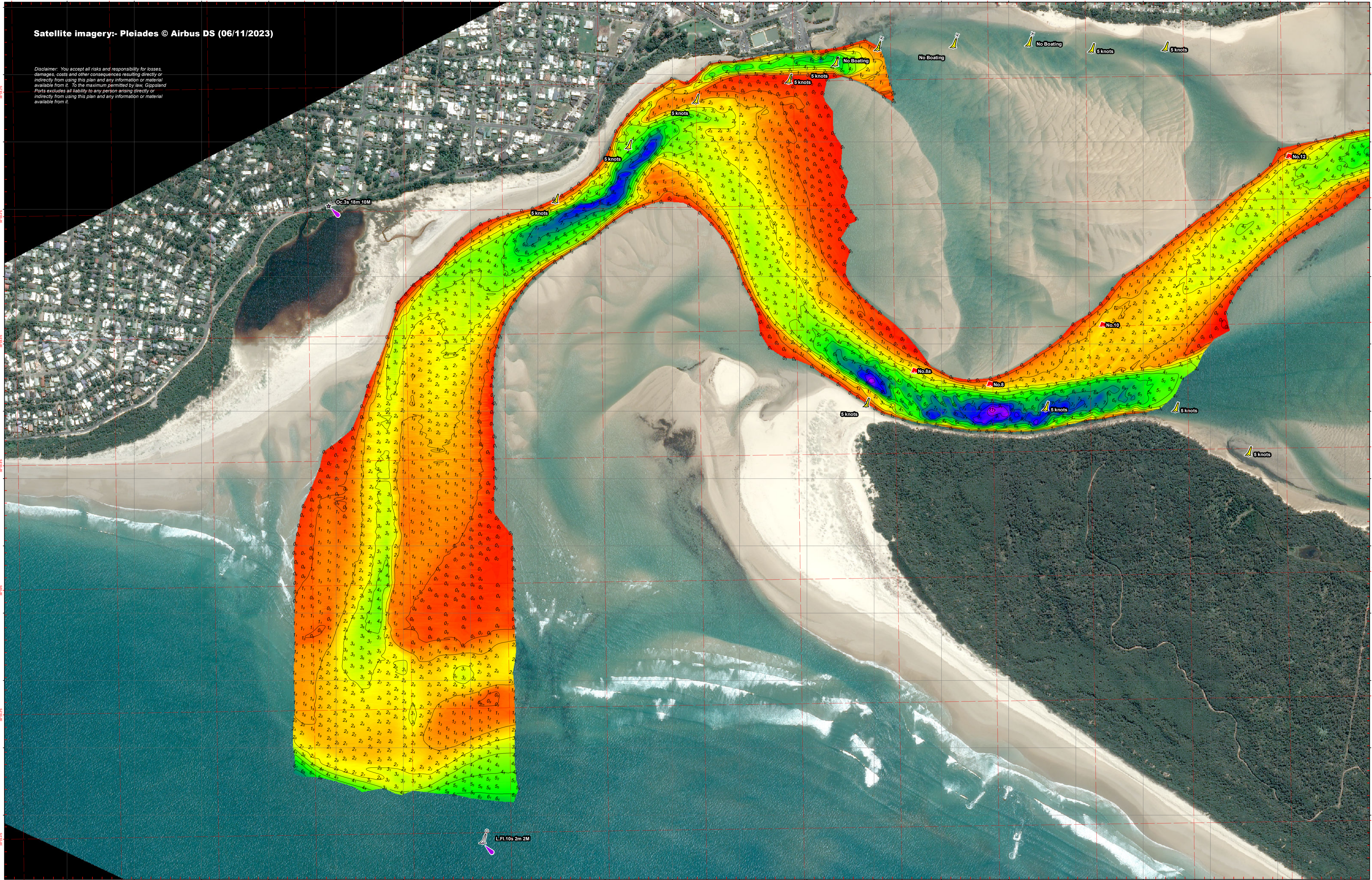


Satellite imagery- Pleiades © Airbus DS (06/11/2023)

Disclaimer: You accept all risks and responsibility for losses, damages, costs and other consequences resulting directly or indirectly from using this plan and any information or material available from it. To the maximum permitted by law, Gippsland Ports excludes all liability to any person arising directly or indirectly from using this plan and any information or material available from it.



Amendment List		
Date	Rev.	Description

Equipment
CeeEcho 200kHz 9 degree beam survey system with Trimble RTK-GNSS

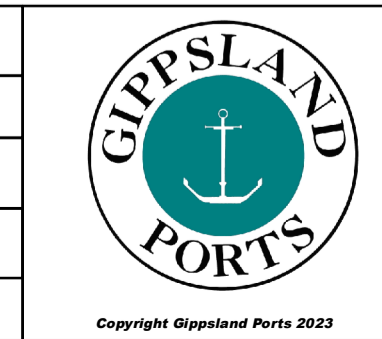
Reliability
Depth Accuracy - ZOC A1 Position Accuracy - ZOC A1 Full bottom search not completed
Previous Plan Numbers
6655

Datum Diagram	
AHD (m)	Chart Datum (m)
1.752	King PM 120 -2.642
0.000	A.H.D. - 0.89
-0.89	Chart Datum - 0.000

Scale 1:5,000 @ A1

Notations
Datum for soundings is Chart Datum, which is 0.89 metres below A.H.D. Co-ordinate system is GDA2020 (Red) and MGA2020, Zone 55 (Grey). Horizontal and Vertical positioning derived using RTK-GNSS. Countours are at 1m intervals. All values are in metres. Negative depths indicate drying heights.

Surveyed by	M.Spykers & B. Spafford
Date of Survey	4/12/2023
Compiled by	B.Spafford (BTech)
Checked by	M.Spykers (BAppSc Surveying)
Date Checked	11/12/2023



Andersons Inlet

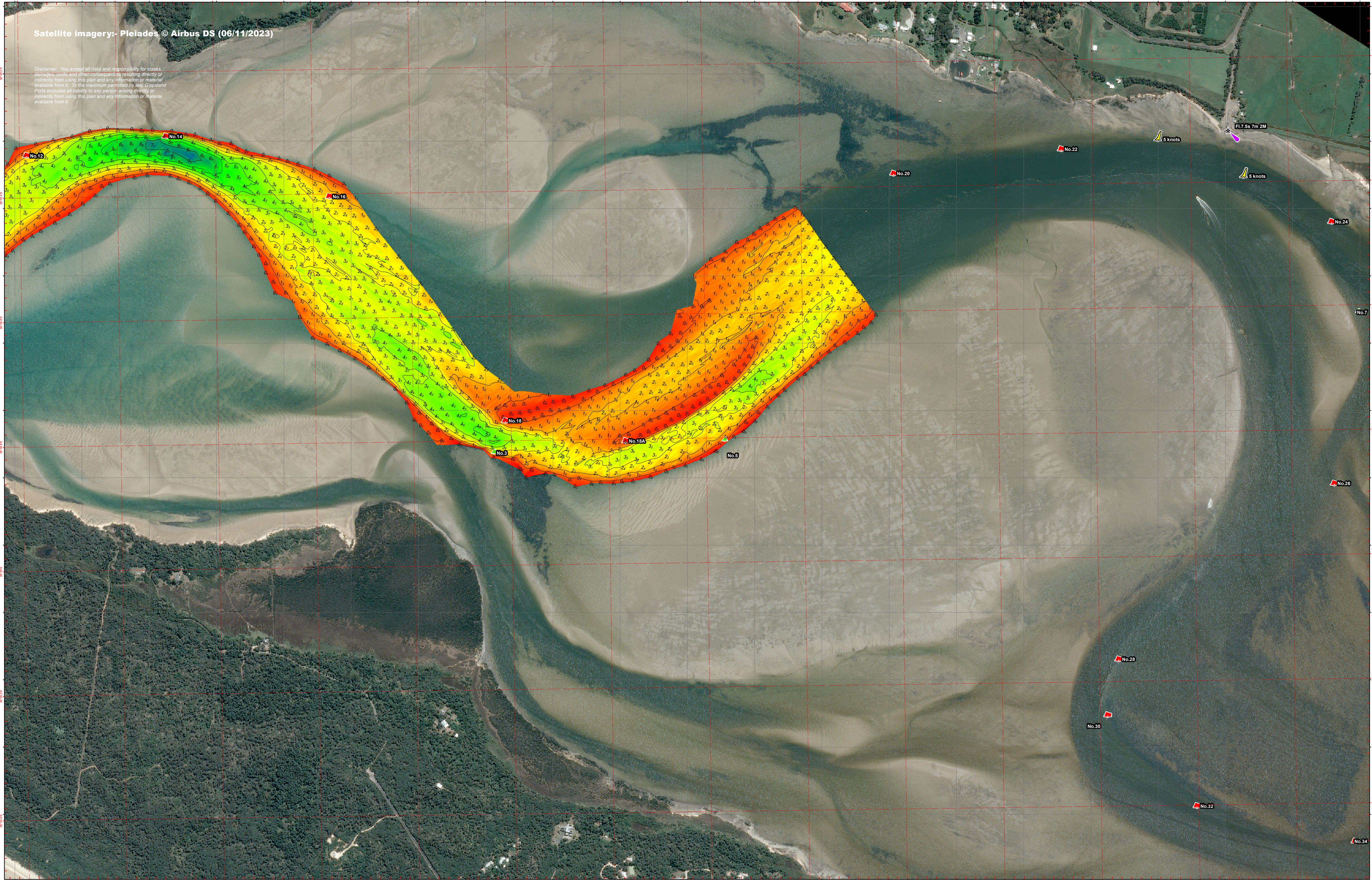
**Vicinity of the Entrance
Entrance to Buoy No.12**

6733

Sheet 1 of 2 **A1**

Satellite imagery- Pleiades © Airbus DS (06/11/2023)

Disclaimer: You accept all risks and responsibility for losses, damages, costs and other consequences resulting directly or indirectly from using this plan and any information or material available from it. To the maximum permitted by law, Gippsland Ports excludes all liability to any person arising directly or indirectly from using this plan and any information or material available from it.



Amendment List		
Date	Rev.	Description

Equipment
CeeEcho 200kHz 9 degree beam survey system with Trimble RTK-GNSS

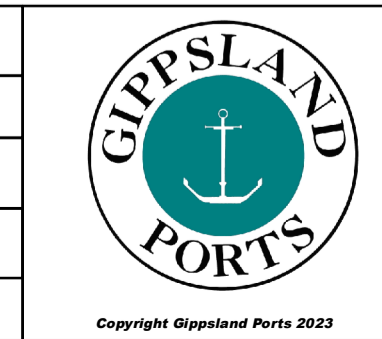
Reliability
Depth Accuracy - ZOC A1 Position Accuracy - ZOC A1 Full bottom search not completed
Previous Plan Numbers
6655

Datum Diagram	
AHD (m)	Chart Datum (m)
1.752	Chart Datum (m)
0.000	A.H.D. - 0.89
-0.89	Chart Datum - 0.000

Scale 1:5,000 @ A1

Notations
Datum for soundings is Chart Datum, which is 0.89 metres below A.H.D. Co-ordinate system is GDA2020 (Red) and MGA2020, Zone 55 (Grey). Horizontal and Vertical positioning derived using RTK-GNSS. Countours are at 1m intervals. All values are in metres. Negative depths indicate drying heights.

Surveyed by	M.Spykers & B.Spafford
Date of Survey	4/12/2023
Compiled by	B.Spafford (BTEch)
Checked by	M.Spykers (BAppSc Surveying)
Date Checked	11/12/2023



Andersons Inlet	
Vicinity of the Entrance Buoy No.12 to No.20	
6733	Sheet 2 of 2
A1	