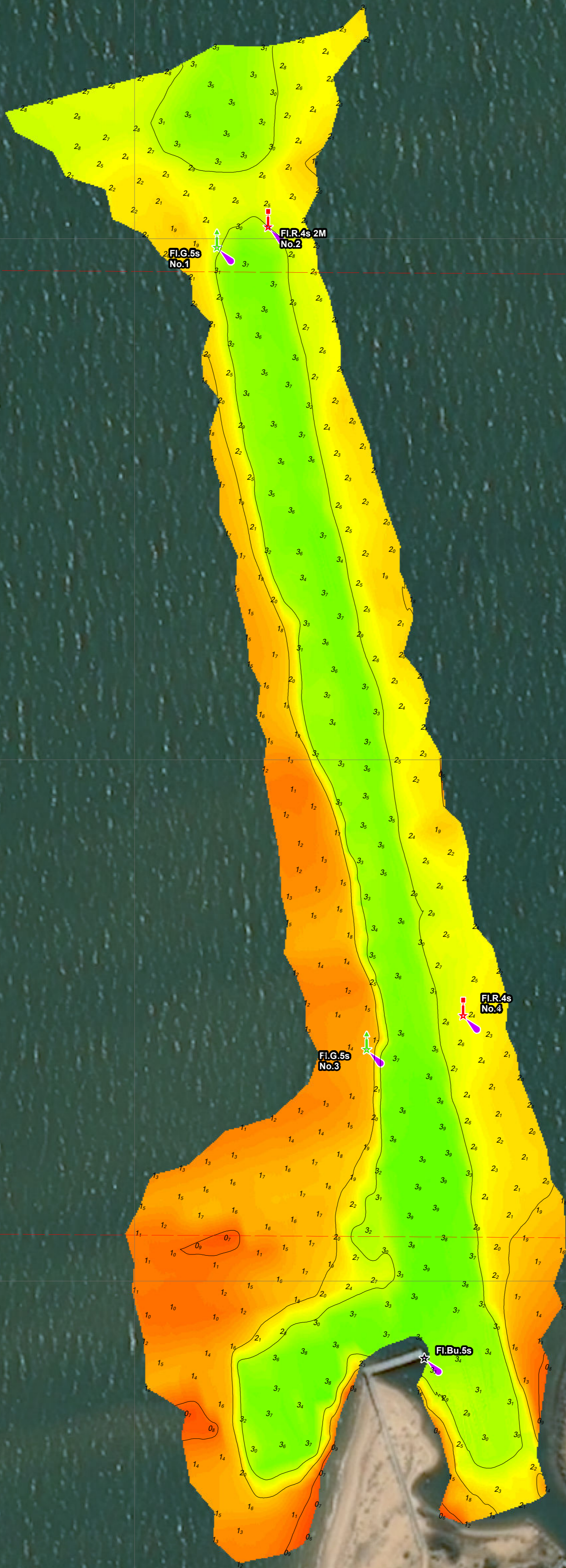


Disclaimer: You accept all risks and responsibility for losses, damages, costs and other consequences resulting directly or indirectly from using this plan and any information or material available from it. To the maximum permitted by law, Gippsland Ports excludes all liability to any person arising directly or indirectly from using this plan and any information or material available from it.

FLY.2s  
No Boating



Satellite Imagery: Pleiades 29/09/2023

Amendment List			Equipment	Reliability
Date	Rev.	Description	CeeEcho 200kHz 9 degree beam survey system with Trimble RTK-GNSS	Depth Accuracy - ZOC A1 Position Accuracy - ZOC A1 Full bottom search not completed
			<b>Previous Plan Numbers</b>	
				6635

Datum Diagram	

<p>Scale 1:1,000 @ A1</p>	<p><b>Notations</b></p> <p>Datum for soundings is Australian Height Datum (A.H.D.) Co-ordinate system is GDA2020 (Red) and MGA2020, Zone 55 (Grey). Horizontal and Vertical positioning derived using RTK-GNSS. Contours are at 1m intervals. All values are in metres. Negative depths indicate drying heights.</p>
---------------------------	--

<b>Surveyed by</b>	M.Spykers & B.Spafford
<b>Date of Survey</b>	22/11/2023
<b>Compiled by</b>	M.Spykers (BAppSc Surveying)
<b>Checked by</b>	B.Spafford (B.Tech)
<b>Date Checked</b>	23/11/2023



<b>Gippsland Lakes</b>	
<b>Lake Victoria</b>	
<b>Loch Sport Marina Jetty Approach</b>	
<b>6730</b>	<b>Sheet 1 of 1</b>
<b>A1</b>	