

NOTICE TO MARINERS

GIPPSLAND PORTS



The following navigation warning is published for general information

AUSTRALIA - VICTORIA

No.244(T) OF 2022

PORT OF GIPPSLAND LAKES

LAKES ENTRANCE BAR - BAR CONDITION ADVICE

LEADING LINE CHANGED TO LINE 3

TSHD TOMMY NORTON DREDGING OPERATIONS

- DATE:** 12th July 2022
- PREVIOUS NOTICE:** Notice to Mariners No.238(T) of 2022 is referred and cancelled.
Notice to Mariners No.243(T) of 2022 is referred and cancelled.
- DETAILS:** Mariners are advised that following the recent (partial) bathymetric survey carried out today 12th July 2022 the leading **"lights in line"** have been aligned to **Line 3** on a bearing of 358°(T) to the Flagstaff.
- Least depths through the **Line 3** transit are 4.2m LAT. Least depths on and around the **"Green Light"** are unavailable but considered to be **less than 3.0m LAT**.
- "Tommy Norton"** will be concentrating dredging operations between Line 2.5 and Line 4 to establish a sand trap and maintain depth on Line 3. Depending on future weather patterns and environmental conditions **"Tommy Norton"** will continue dredging to the East towards the "Green Light" line and the design channel.
- Mariners are directed to stay clear of the **"Tommy Norton"** during dredging operations and to request approval to pass from the Master on VHF Ch16.
- Please take note of the attached (partial) bathymetric survey which indicates the Leading Line 3 and depths (LAT) through that transit.
- For the purpose of the bathymetry LAT (Lowest Astronomical Tide) is "zero tide". True depths are calculated by adding the height of tide at Lakes Entrance for any given time.

NOTICE TO MARINERS

GIPPSLAND PORTS



Mariners are advised to take extra precaution when crossing the Bar at Lakes Entrance, noting that the best time to cross the bar is during daylight hours at slack water in the entrance channel and swells less than 1.5 metres.

Near real time wave, tide and weather conditions are available on the Gippsland Ports Website at:

[Lakes Entrance Waves Tides and Weather - Gippsland Ports](https://www.gippslandports.vic.gov.au/boating/waterways-online/)

For further information please call Gippsland Ports Harbour Master on 0427 610 025

CHARTS ENC AUSLEN01
AFFECTED:

PUBLICATIONS Gippsland Ports Waterways online website available at;
AFFECTED: <https://www.gippslandports.vic.gov.au/boating/waterways-online/>

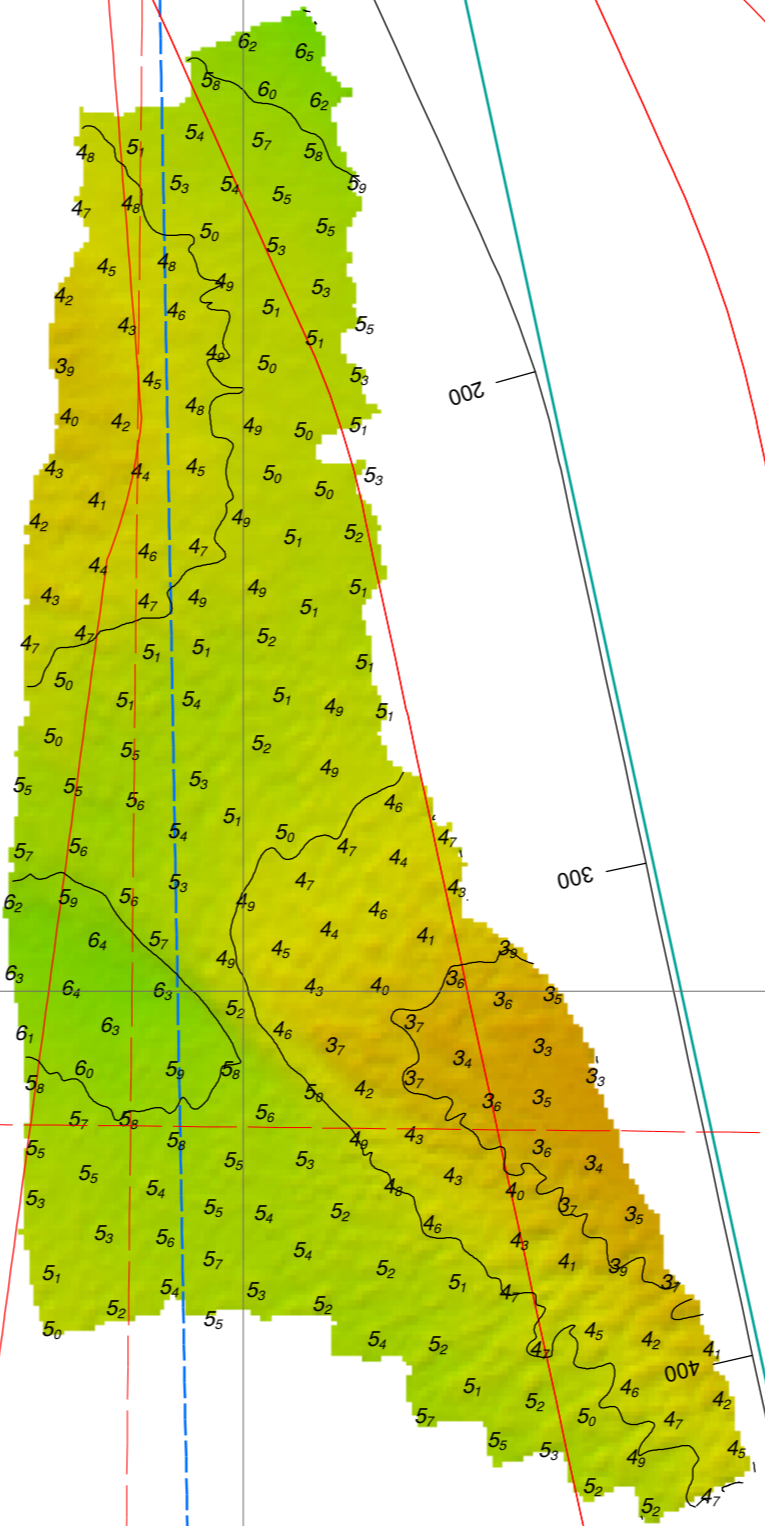
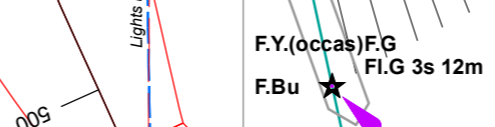
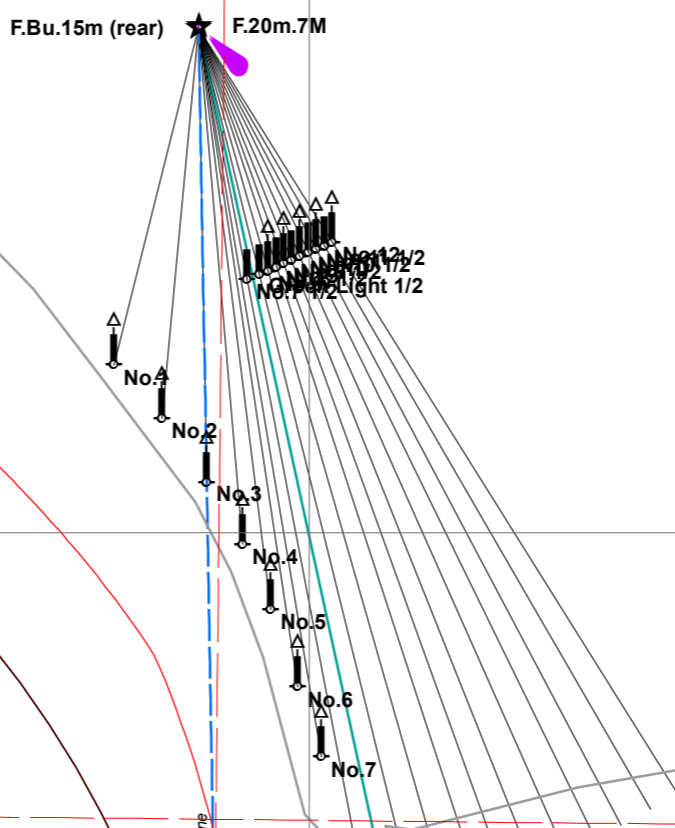
FURTHER A further notice will be issued.
NOTICE:

CAPT. BEVIS HAYWARD
HARBOUR MASTER
GIPPSLAND PORTS

Disclaimer: You accept all risks and responsibility for losses, damages, costs and other consequences resulting directly or indirectly from using this plan and any information or material available from it, to the maximum permitted by law. Gippsland Ports excludes all liability to any person arising directly or indirectly from using this plan and any information or material available from it.

Flagstaff

Long Island



Amendment List			Equipment	Reliability
Date	Rev.	Description	R2 Sonic 2022 multibeam sonar; RTK enabled Applanix POS MV 320 GNSS position and orientation system	Depth Accuracy - ZOC A1 Position Accuracy - ZOC A1 Full bottom search completed
			Previous Plan Numbers	6590

Datum Diagram	
AHD (m)	Chart Datum (m)
10.610	Chart Datum - 11.367
0.000	A.H.D. - 0.757
-0.757	Chart Datum - 0.000

Scale 1:1,500 @ A1

0 25 50 100 metres

Notations Datum for soundings is Chart Datum, which is 0.757 metres below A.H.D. Co-ordinate system is GDA2020 (Red) and MGA2020, Zone 55 (Grey). Horizontal and Vertical positioning derived using RTK-GNSS. Countours are at 1m intervals. All values are in metres. Negative depths indicate drying heights.

Surveyed by	M.Spykers (BAppSc Surveying)
Date of Survey	12/07/2022
Compiled by	M.Spykers (BAppSc Surveying)
Checked by	P.Hahnemann (BAppSc Surveying)
Date Checked	12/07/2022



Gippsland Lakes	
Lakes Entrance	
Vicinity of The Entrance	
6591	Sheet Size A1
Sheet 1 of 1	