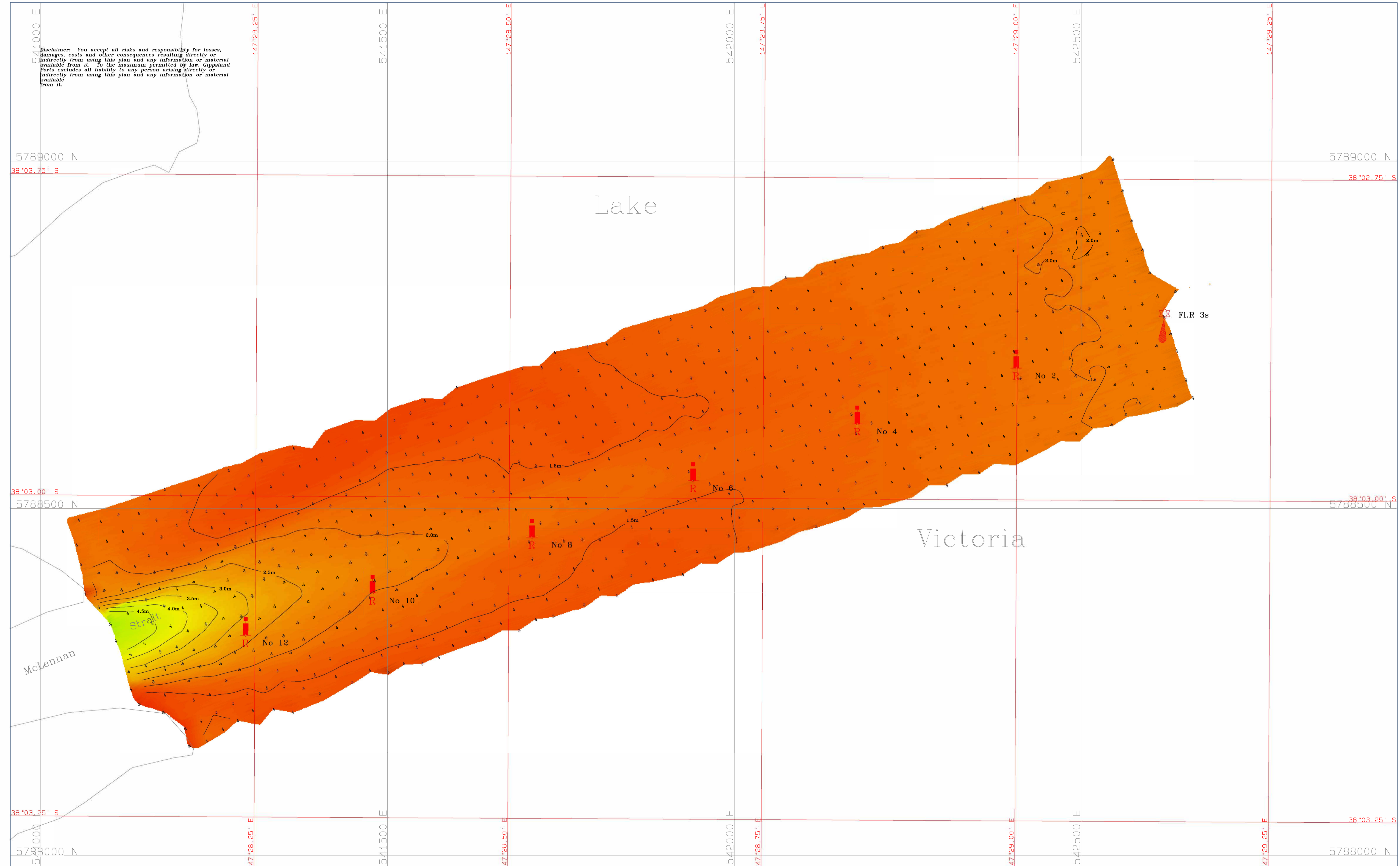


Disclaimer: You accept all risks and responsibility for losses, damages, costs and other consequences resulting directly or indirectly from using this plan and any information or material available from it. To the maximum permitted by law, Gippsland Ports excludes all liability to any person arising directly or indirectly from using this plan and any information or material available from it.



Amendment List		
Date	Ver	Description

<b>Reliability</b>
Depth Accuracy – IHO Special Order
Position Accuracy – IHO Special Order
Not full bottom search
<b>Previous Plan Numbers</b>
5231

SCALE 1 : 2500

**Datum Notes**  
 Datum for soundings is AHD and all depths are measured in Metres  
 Co-ordinate system is GDA94 (Red) & MGA 94, Zone 55.  
 Tidal data derived using RTK-GPS.  
 Contours are at 0.5m intervals.

Surveyed	B.Spafford Bachelor of Technology
Date	22nd of January 2013
Compiled	B.Spafford Bachelor of Technology
Equipment	Ceestar 200 kHz narrow beam survey system with Trimble SPS770 RTK- GPS.



**Gippsland Lakes**

**Lake Victoria**

McLennan Strait – Eastern Approach

5721

Sheet 1 of 1    A1