

549600

549800

147°34'E

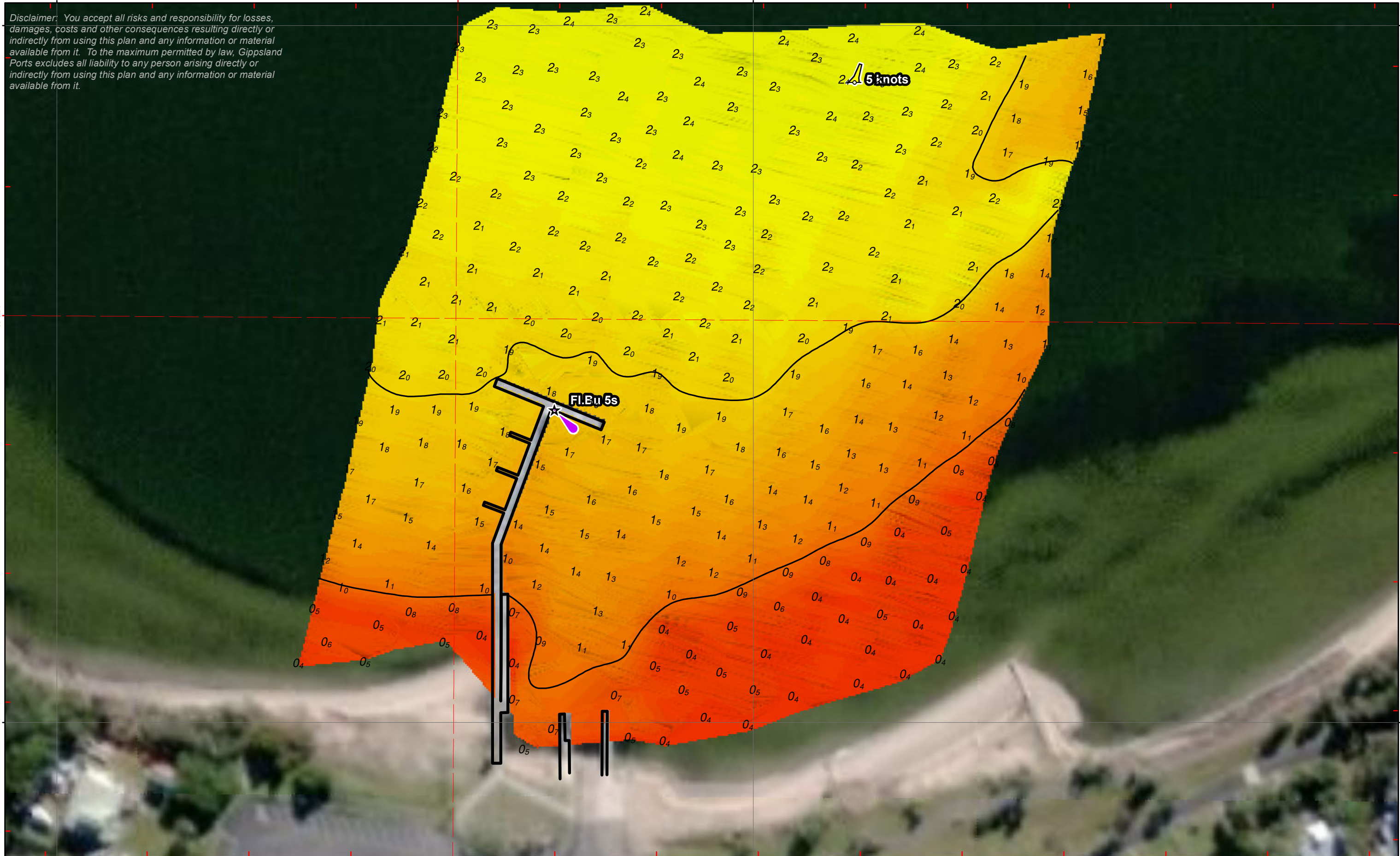
5788200

5788200

Disclaimer: You accept all risks and responsibility for losses, damages, costs and other consequences resulting directly or indirectly from using this plan and any information or material available from it. To the maximum permitted by law, Gippsland Ports excludes all liability to any person arising directly or indirectly from using this plan and any information or material available from it.

38°32'S

38°32'S



549600

147°34'E

549800

5788000

5788000

Amendment List		
Date	Rev.	Description

Equipment
CeeEcho 200kHz 9 degree beam survey system with Trimble RTK-GNSS

Reliability
Depth Accuracy - ZOC A1 Position Accuracy - ZOC A1 Full bottom search not completed
<b>Previous Plan Numbers</b>
6386

Datum Diagram

Scale 1:1,000 @ A3

**Notations** Datum for soundings is Australian Height Datum (A.H.D.)  
Co-ordinate system is GDA2020 (Red) and MGA2020, Zone 55 (Grey).  
Horizontal and vertical positioning derived using RTK-GNSS.  
Countours are at 1m intervals.  
All values are in metres. Negative depths indicate drying heights.

Surveyed by	B.Spafford & P.Hahnemann
Date of Survey	27th October 2021
Compiled by	P.Hahnemann (BAppSc Surveying)
Checked by	B.Spafford (Bachelor of Technology)
Date Checked	28th October 2021



<b>Gippsland Lakes</b>	
<b>Lake Victoria</b>	
<b>Loch Sport Mooring Jetty Approach</b>	
<b>6501</b>	<b>Sheet 1 of 1</b>
<b>A3</b>	