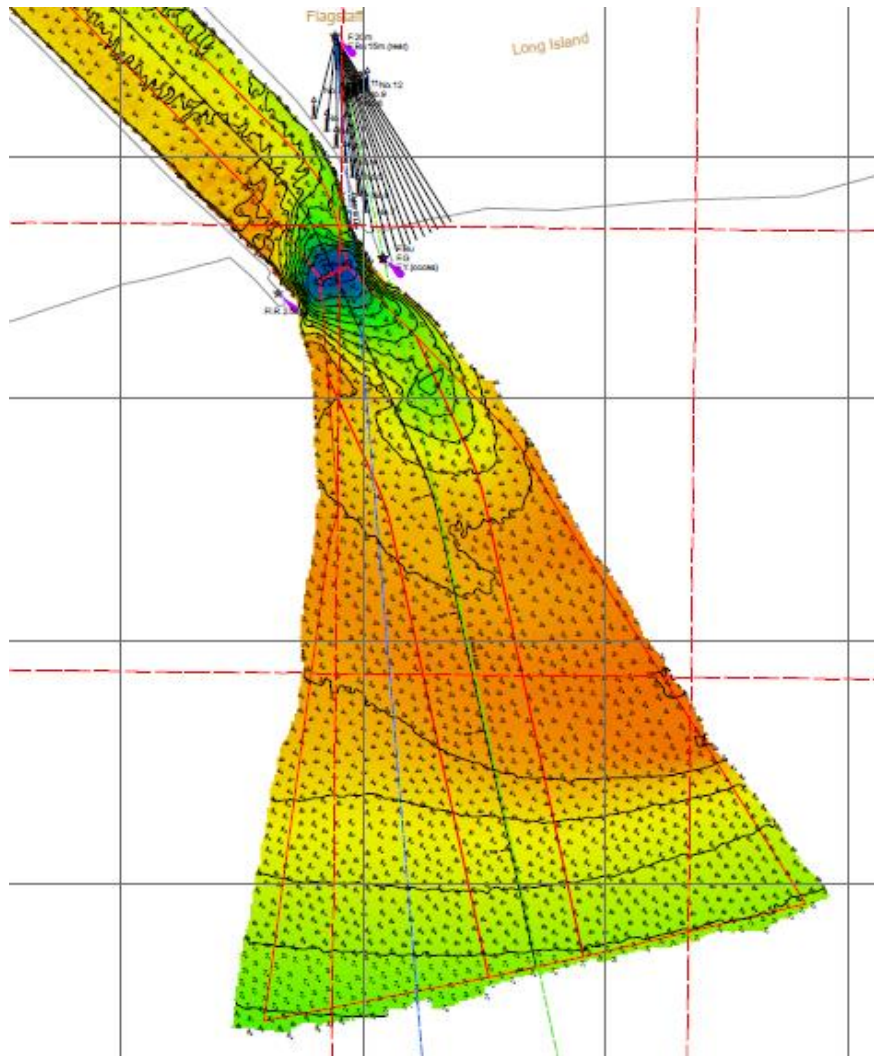


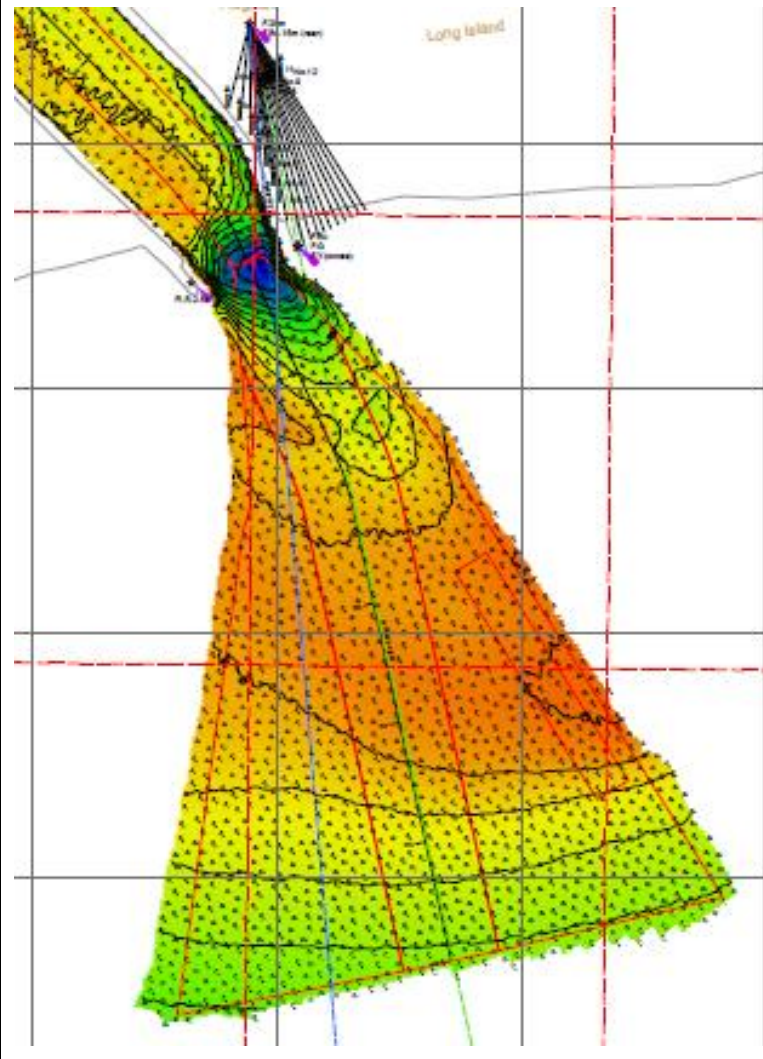
<b>GLOA Project TSHD Long Term Maintenance Dredging Project 2016 (Sep - Oct)</b>			
<b>Date (week commencing)</b>	<b>Scheduled works</b>	<b>Actual works</b>	<b>Comments</b>
22 <sup>nd</sup> August	Mobilisation of Pelican TSHD Pre-dredge Bar survey undertaken by GP	26Aug Pelican TSHD departed Port of Nelson, New Zealand to Port Kembla, Australia for AQIS/DAFF quarantine clearance. Left Port Kembla for Lakes Entrance 29 <sup>th</sup> August Pre-dredge bar survey completed 2 <sup>nd</sup> September	Pelican TSHD has completed quarantine cleaning and inspection at Nelson and GP issued Notice to Mobilise on 26 August.
5 <sup>th</sup> September	Pelican voyage to Lakes Entrance and make ready for dredging work to begin Additional Pre-dredge survey completed 2 <sup>nd</sup> September Set up on-board survey positioning system Preparation of Pelican TSHD Site induction of Pelican crew Dredging to commence on the Bar Channel Turbidity monitoring to commence	Pelican arrived Lakes Entrance 6 <sup>th</sup> September Crew and vessel preparations completed and work commenced 7 <sup>th</sup> September Inductions completed, vessel refuelled, survey system installed on board. Contractual Notices issued to commence dredging from 1830hrs 7Sep2015	All inductions and vessel preparations completed and work commenced in good weather window. Weather, sea state and depth over the Bar restricted dredging at commencement of program. 4846m3 dredged to 8Sep2016 Vessel refuelled on 9 <sup>th</sup> September, work ceased late on 9 <sup>th</sup> with weather change and recommenced 10 <sup>th</sup> Turbidity monitoring commenced
12 <sup>th</sup> September	Continue dredging of 80m wide Bar Channel to -5.0m CD, then extend into east and west wedge areas. 12/9/2016 - 29,501m3 remain to be dredged from Bar Channel Shift change and bunkering scheduled for 14/9/2016	Dredging continued in the bar channel when conditions allowed. Bunkering and crew shift change on 14 <sup>th</sup> Total volume to 18 <sup>th</sup> September – 43,895m3.	Weather / sea conditions delays during the week due to swell and westerly winds Some delays due to presence of whales and dolphins
19 <sup>th</sup> September	Continue dredging of 80m wide Bar Channel to -5.0m CD, then extend into east and west wedge areas. Bar channel survey 20th	Bar Channel completed to -5.0m Survey indicates 97,134m3 remain to be dredged Total volume dredged to 25 <sup>th</sup> September – 75,047m3	2 days delays during the week due to swell conditions. Minor delays due to presence of whales and dolphins Turbidity report received and shows very low levels.
26 <sup>th</sup> September	Continue dredging of 80m wide Bar Channel to -5.0m CD, then extend into east and west wedge areas. Bar channel survey 20th	Survey indicates 79,408m3 remain to be dredged Dredging continued in east and west wedge areas	Some minor delays during the week due to swell conditions. Minor delays due to presence of whales and dolphins
3 <sup>rd</sup> October	Survey scheduled for 3 <sup>rd</sup> Continue dredging east and west wedge areas	Survey indicates 41,653m3 remain to be dredged Dredging continued in east and west wedge areas and commenced in the sand traps	Weather / sea conditions delays during the week due to swell and westerly winds Significant infill occurring on the inner most section of the western wedge
10 <sup>th</sup> October	Survey scheduled for 10 <sup>th</sup> Continue dredging east and west wedge areas and sand traps. Inner channel dredging when conditions allow.	Survey of 7 <sup>th</sup> October indicates 32,964m3 remain to be dredged Dredging continued in the sand traps and area of shoaling at inner west side of wedge which developed as result of westerly weather	Significant infill continuing on the inner most section of the western wedge. 176,066m3 dredged at weeks end
17 <sup>th</sup> October	Survey scheduled for 18 <sup>th</sup> Continue dredging east and west wedge areas and sand traps and focus of shoaling area at inner section of western wedge Inner channel dredging when conditions allow. On site component of EMP audit to commence this week	Survey of 18 <sup>th</sup> indicates 19,247m3 remaining to be dredged. Dredging continued in the sand traps and area of shoaling at inner west side of wedge. 2000m3 dredged from Turning Circle. On-board component of EMP audit completed.	Infill continuing at inner western wedge section with westerly weather but significantly reduced by dredging. 55 hours lost to weather/sea conditions during the week. Cumulative total of 194,625m3 dredged at weeks end.
24 <sup>th</sup> October	Survey scheduled for 25 <sup>th</sup> (weather dependent) Completion of dredging in sand traps and wedge area. Practical Completion of 2016 program planned for Wed 26 <sup>th</sup> .	Survey of 21 <sup>st</sup> indicates 13,151m3 remaining to be dredged from bar/wedge (not including sand traps) Practical completion occurred at 5:30pm, 26 <sup>th</sup> October	Sea state delayed any dredging until 25 <sup>th</sup> . Cumulative total of 200,768m3 at Practical Completion.

Progressive Bar Surveys - Full bathymetric surveys of the Bar and Inner Channels can be found [here](#).

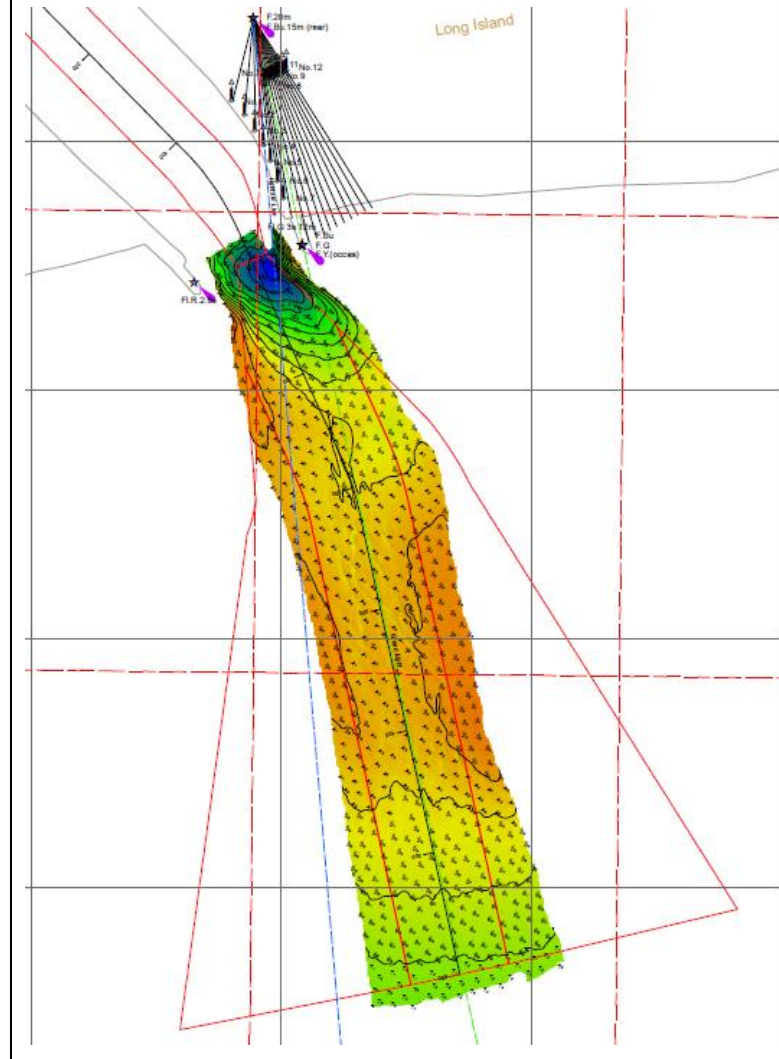
Survey Pre-Dredging (22<sup>nd</sup> August)



Survey Pre-Dredging (2<sup>nd</sup> September)

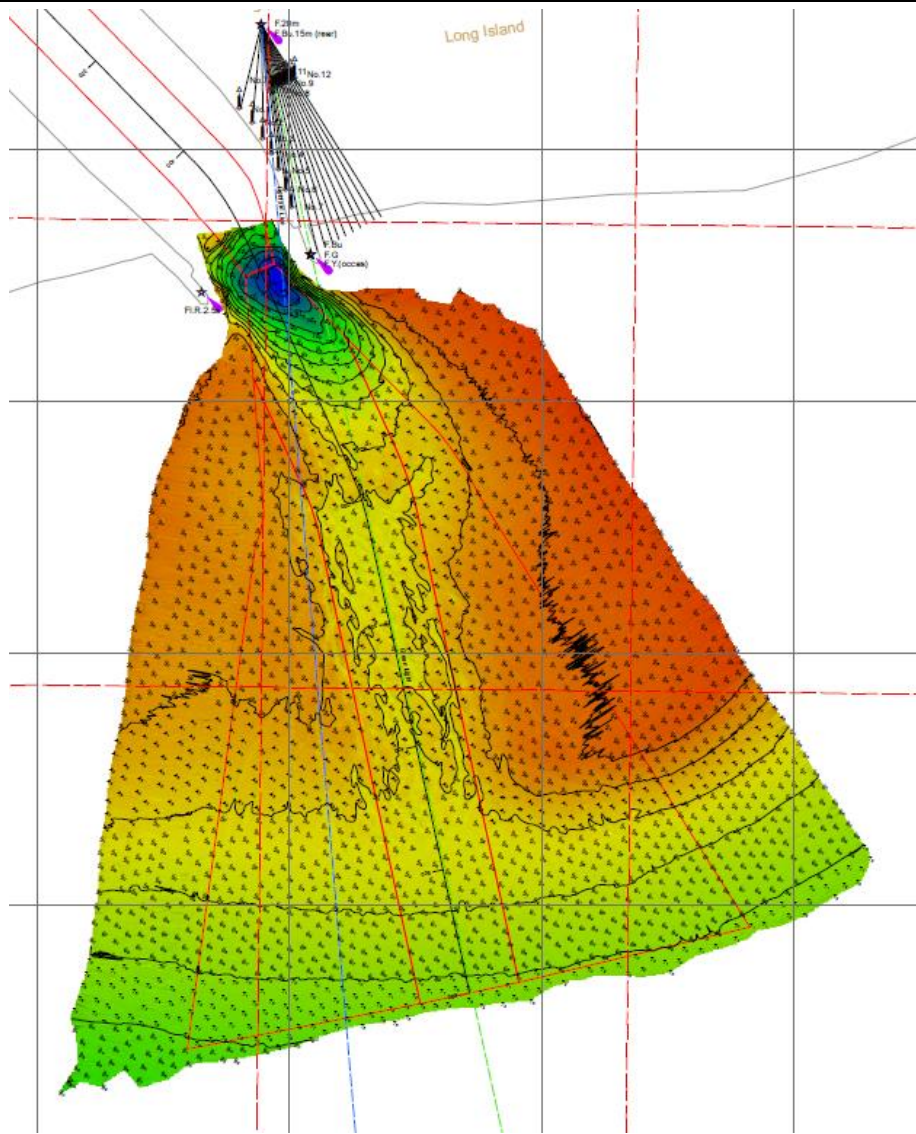


12<sup>th</sup> September (dredging commencement in start up channel)

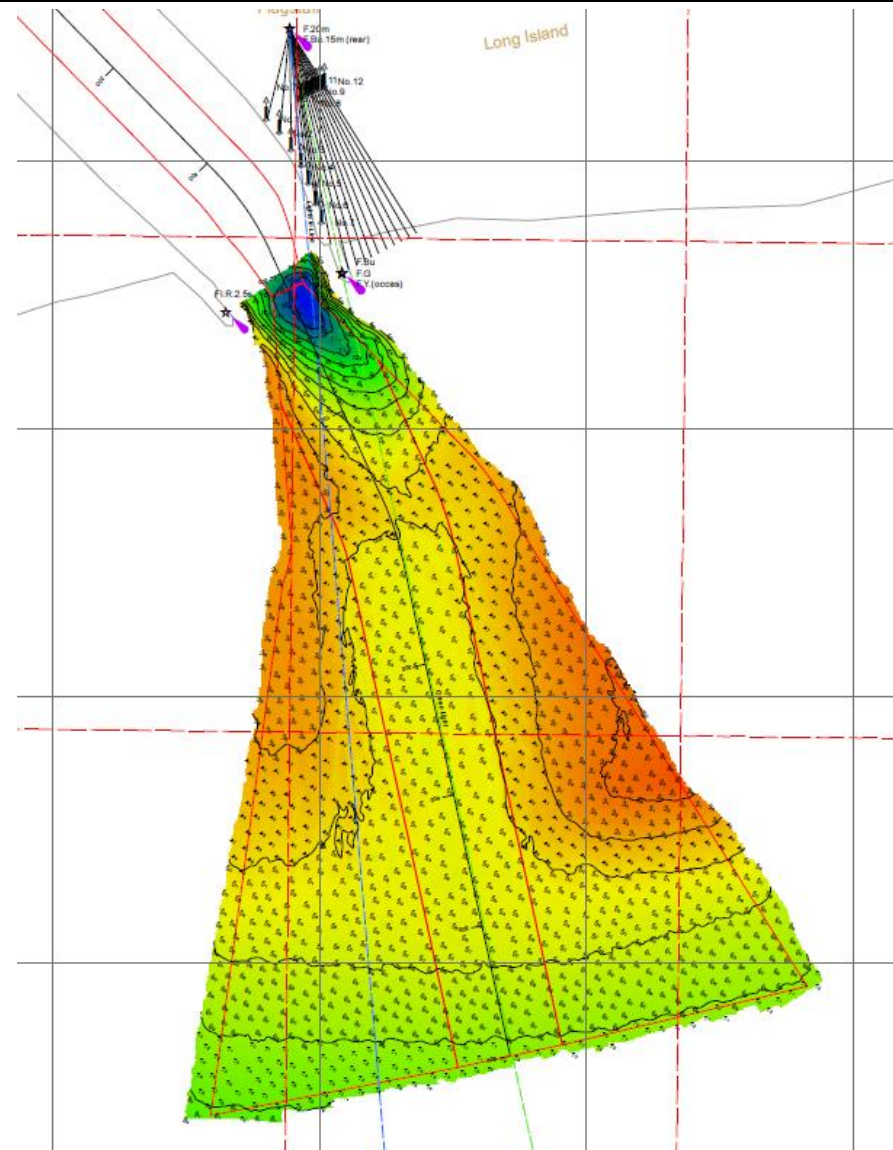


Progressive Bar Surveys - Full bathymetric surveys of the Bar and Inner Channels can be found [here](#).

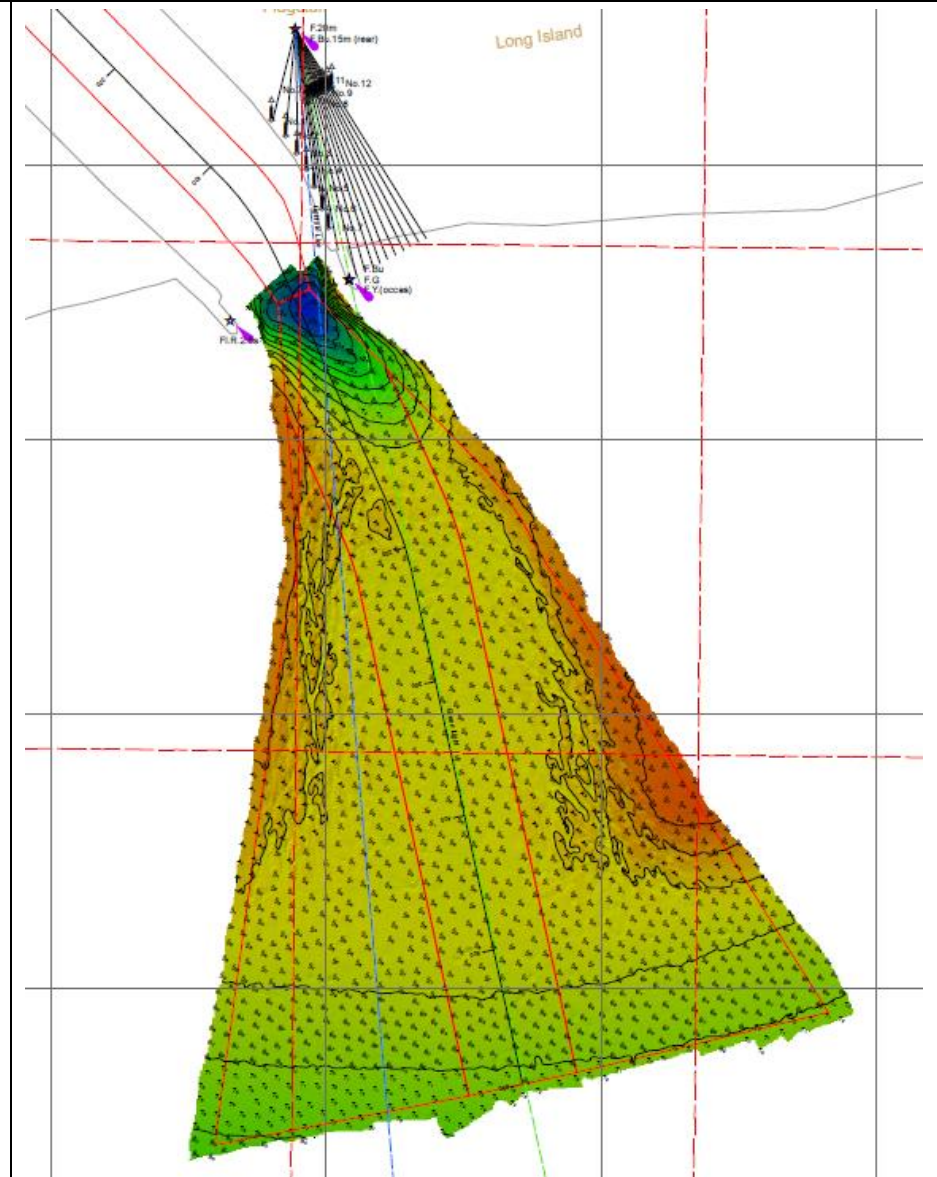
20<sup>th</sup> September



26<sup>th</sup> September

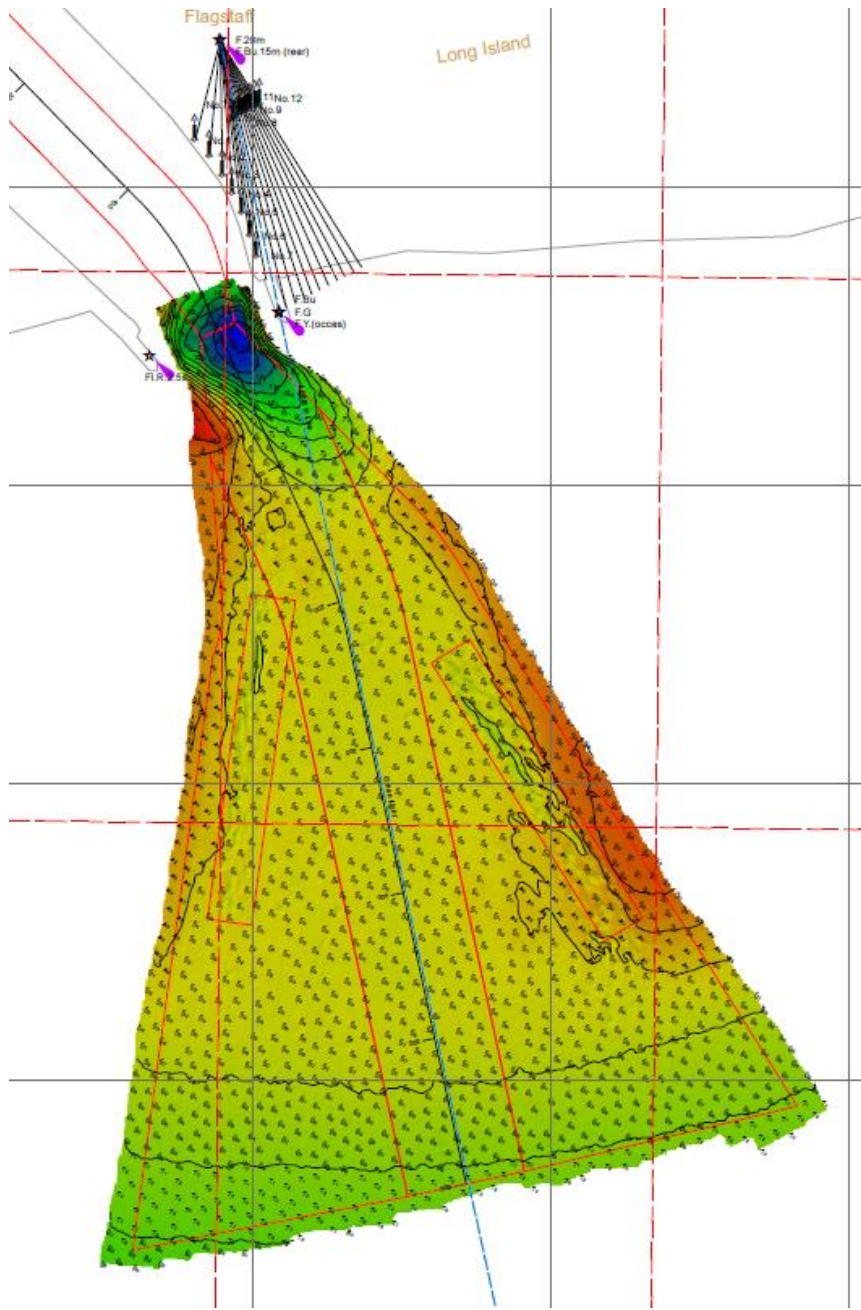


3<sup>rd</sup> October

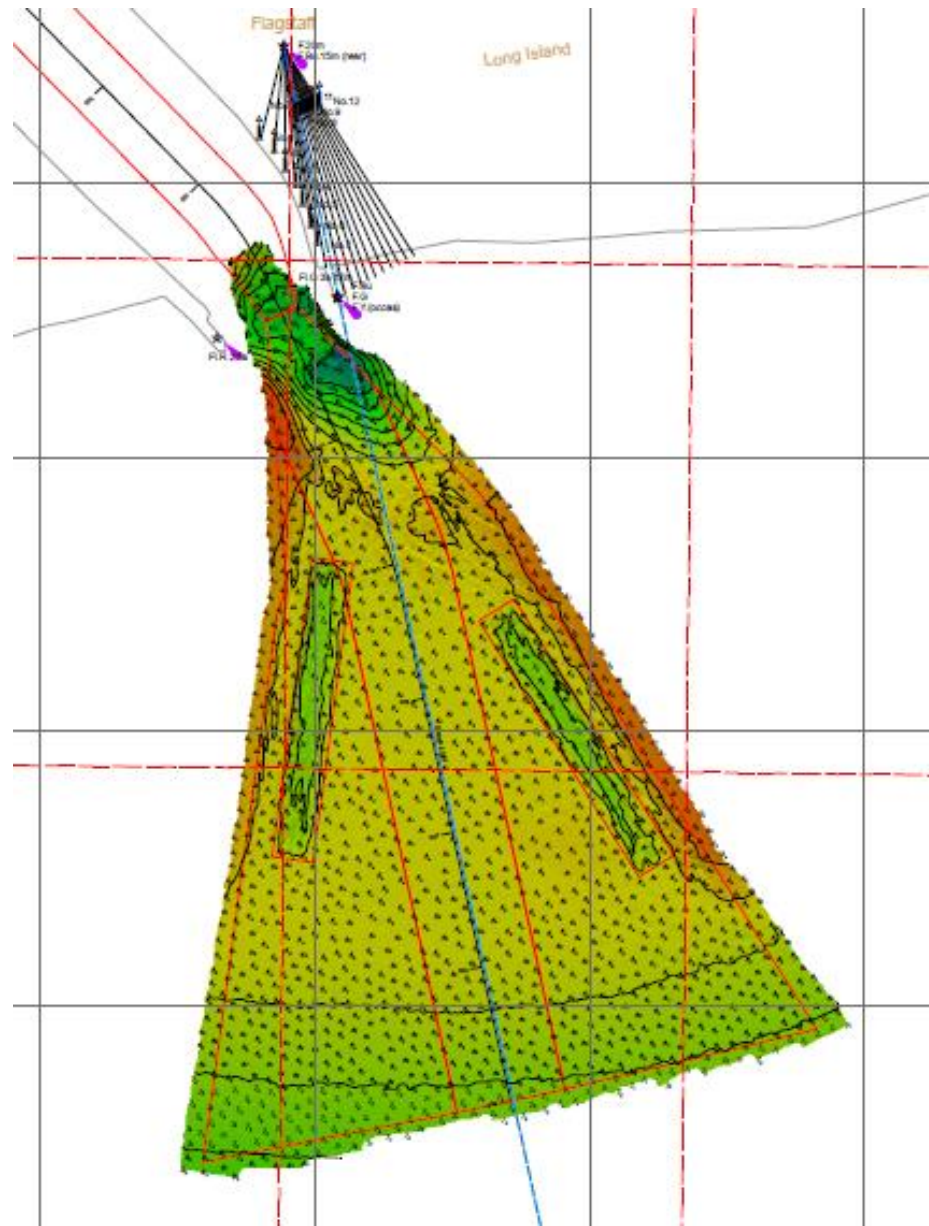


Progressive Bar Surveys - Full bathymetric surveys of the Bar and Inner Channels can be found [here](#).

7<sup>th</sup> October



18<sup>th</sup> October



21<sup>st</sup> October

