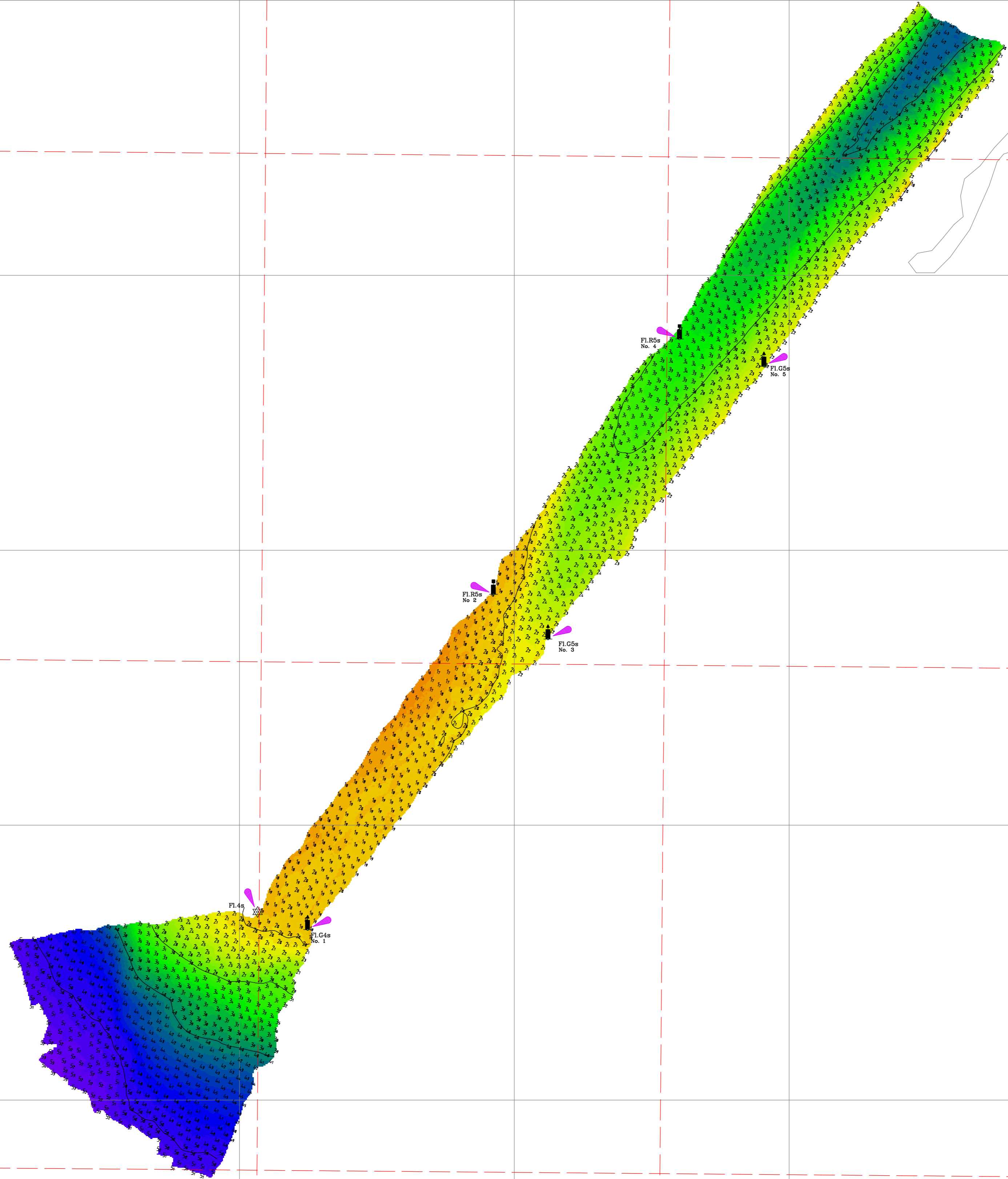


Disclaimer: You accept all risks and responsibility for losses, damages, costs and other consequences resulting directly or indirectly from using this plan and any information or material available from it. To the maximum permitted by law, Gippsland Ports excludes all liability to any person arising directly or indirectly from using this plan and any information or material available from it.



Reliability	Amendment List		
Depth Accuracy - IHO Special Order	Date	Ver	Description
Position Accuracy - IHO Special Order	-	-	-
Full bottom search	-	-	-
Previous Plan Numbers	-	-	-
5734	-	-	-

SCALE 1 : 2500 @ A1

0 100 200 300

Notations
 Datum for soundings is the Australian Height Datum A.H.D.
 Co-ordinate system is GDA 94 (Red) and MGA 94, Zone 55 (Grey).
 Tidal data derived using RTK-GPS.
 All values are in metres. Contours are at 1m intervals.

Surveyed	B.Spafford Bachelor of Technology
Date	29th of January 2014
Compiled	B.Spafford Bachelor of Technology
Equipment	R2 Sonic 2022 multibeam sonar. RTK enabled Applanix POS MV 320 GNSS position and orientation system.



Gippsland Lakes
Lake King
 Tambo River Approach

5801

Sheet 1 of 1 **A1**