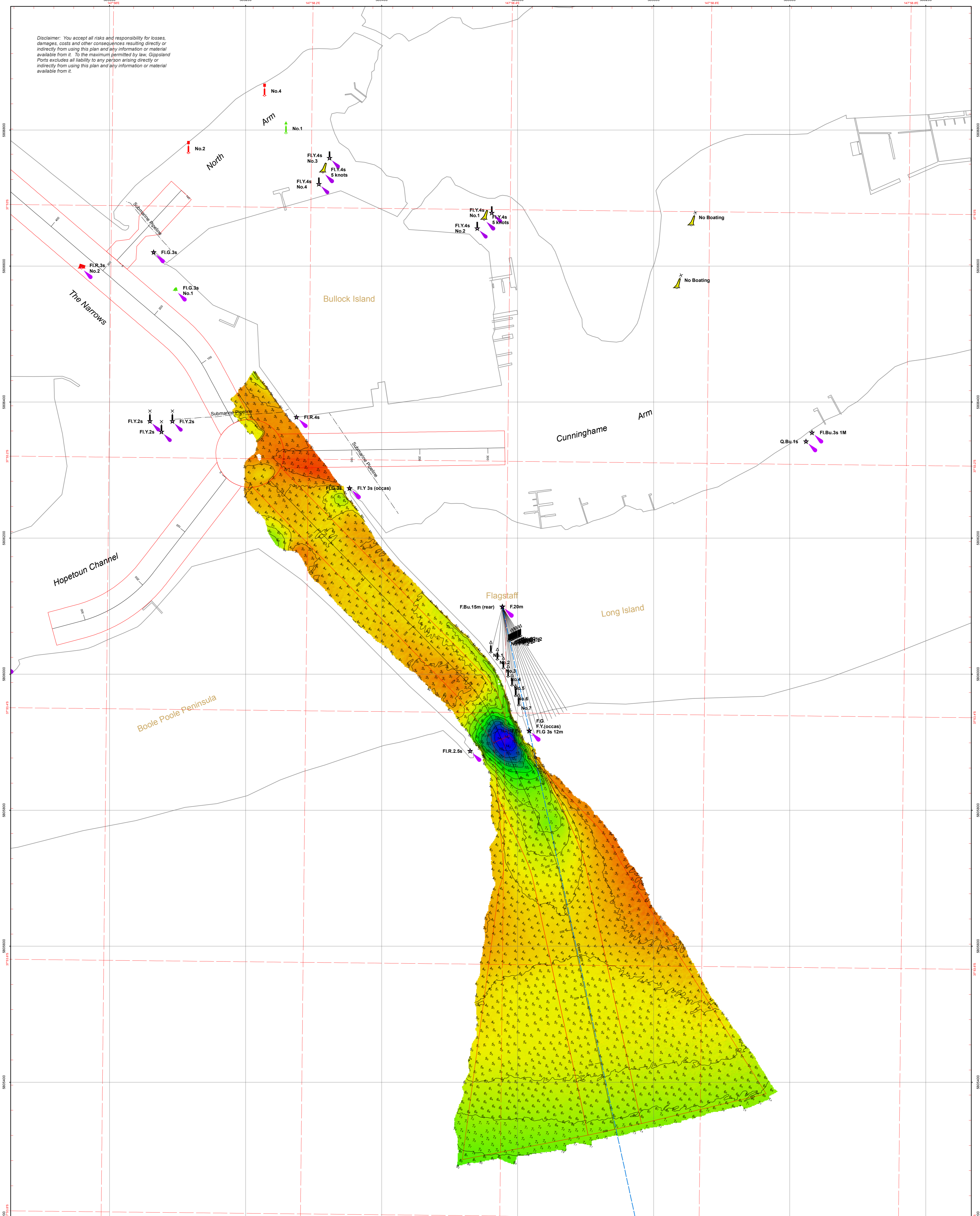


Disclaimer: You accept all risks and responsibility for losses, damages, costs and other consequences resulting directly or indirectly from using this plan and any information or material available from it. To the maximum permitted by law, Gippsland Ports excludes all liability to any person arising directly or indirectly from using this plan and any information or material available from it.



Amendment List			Reliability	
Date	Rev.	Description	Depth Accuracy - ZOC A1	Position Accuracy - ZOC A1
			Full bottom search completed	
			Previous Plan Numbers	
			6028	

Datum Diagram	
AHD (m)	Chart Datum (m)
10.610	11.367
0.000	0.757
-0.757	0.000

Scale 1:2,500 @ A1

Notations
 Datum for soundings is Chart Datum, which is 0.757 metres below A.H.D.
 Co-ordinate system is GDA94 (Red) and MGA94, Zone 55 (Grey).
 Tidal data derived using RTK-GNSS. Contours are at 1m intervals.
 All values are in metres. Negative depths indicate drying heights.

Surveyed	B.Spafford Bachelor of Technology
Date	23rd of May 2017
Compiled	B.Spafford Bachelor of Technology
Equipment	R2 Sonic 2022 multibeam sonar. RTK enabled Applanix POS MV 320 GNSS position and orientation system.



Gippsland Lakes	
Lakes Entrance	
Vicinity of The Entrance	
6033	Sheet Size A1
Sheet 1 of 1	