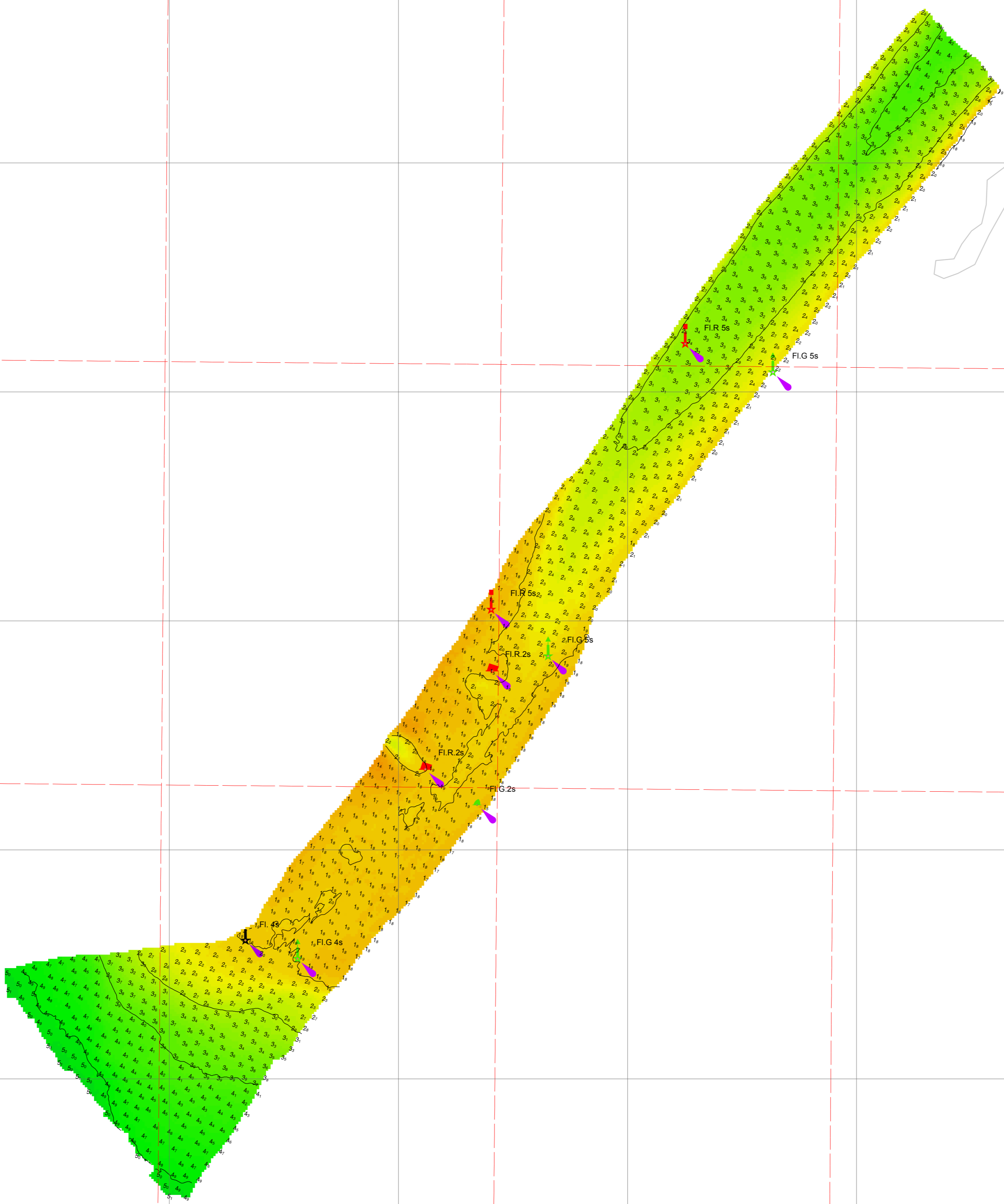


Disclaimer: You accept all risks and responsibility for losses, damages, costs and other consequences resulting directly or indirectly from using this plan and any information or material available from it. To the maximum permitted by law, Gippsland Ports excludes all liability to any person arising directly or indirectly from using this plan and any information or material available from it.



Amendment List			Reliability	
Date	Rev.	Description	Depth Accuracy - ZOC A1	Position Accuracy - ZOC A1
			Full bottom search completed	
			Previous Plan Numbers	
			5946	

Scale 1:2,500 @ A1

Notations  
 Datum for soundings is Australian Height Datum (A.H.D.)  
 Co-ordinate system is GDA94 (Red) and MGA94, Zone 55 (Grey).  
 Tidal data derived using RTK-GNSS. Countours are at 1m intervals.  
 All values are in metres. Negative depths indicate drying heights.

Surveyed	B.Spafford Bachelor of Technology
Date	3rd of January 2017
Compiled	B.Spafford Bachelor of Technology
Equipment	R2 Sonic 2022 multibeam sonar. RTK enabled Applanix POS MV 320 GNSS position and orientation system.



<b>Gippsland Lakes</b>	
<b>Lakes King</b>	
<b>Tambo River Approach</b>	
<b>6010</b>	Sheet Size <b>A1</b>
Sheet 1 of 1	