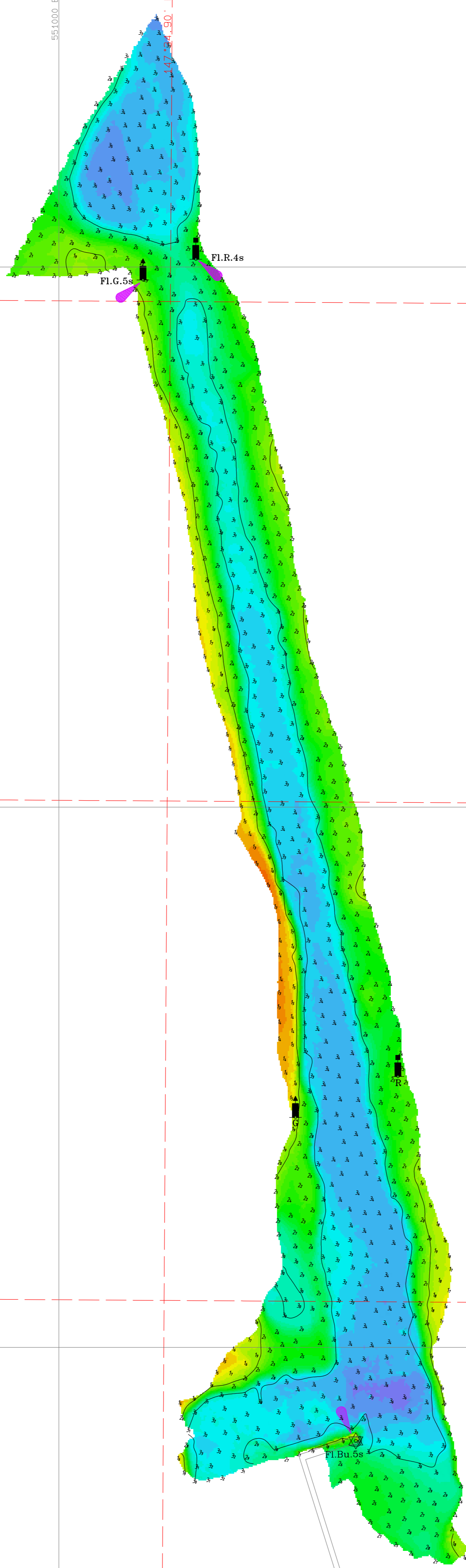


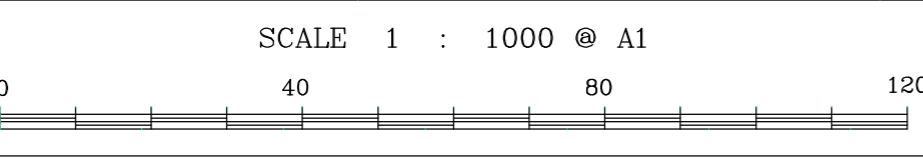
Disclaimer: You accept all risks and responsibility for losses, damages, costs and other consequences resulting directly or indirectly from using this plan and any information or material available from it. To the maximum permitted by law, Gippsland Ports excludes all liability to any person arising directly or indirectly from using this plan and any information or material available from it.

Lake Victoria

Marina

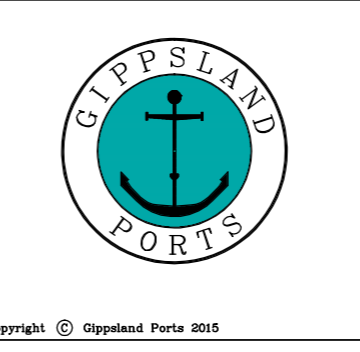


Reliability	Amendment List		
Depth Accuracy - ZOC A1	Date	Ver	Description
Position Accuracy - ZOC A1	.	.	.
Full bottom search completed	.	.	.
Previous Plan Numbers	.	.	.
5824	.	.	.



Notations
 Datum for soundings is Australian Height Datum (A.H.D.).
 Co-ordinate system is MGA 94, Zone 55 (Grey) & GDA94 (Red)
 Central Meridian 147 Deg. Tidal data derived using RTK-GNSS.
 All values are in metres. Contours are at 1m intervals.

Surveyed	M.Spykers (BAppSc Surveying)
Date	12th February 2015
Compiled	M.Spykers (BAppSc Surveying)
Equipment	R2 Sonic 2022 multibeam sonar. RTK enabled Applanix POS MV 320 GNSS position and orientation system.



<h1>Gippsland Lakes</h1> <h2>Lake Victoria</h2> <p>Loch Sport Marina Jetty Approach</p>		<p>5881</p> <p>Sheet 1 of 1</p>
		<p>A1</p>